

CDW CREATIVE DISPLAY WORKS INC.

Liquor Fixtures 2025



Liquor wall in pic – 4ft wide x 90” tall cabinets connected into 24ft wide display. LED sign headers with downlight and LED shelving. Side-by-side steel shelves adjustable in 1” height increments.

Creative Display Works designs and manufactures all types of sales displays for the c-store industry. We take pride in making our industry-leading liquor displays and shipping them fully assembled for our clients. We manufacture in Phoenix, Arizona, and ship on pallet to 48 states. Call us or reply today to get a custom quote for your store’s liquor display and fixture needs.

Our Liquor Cabinet Features

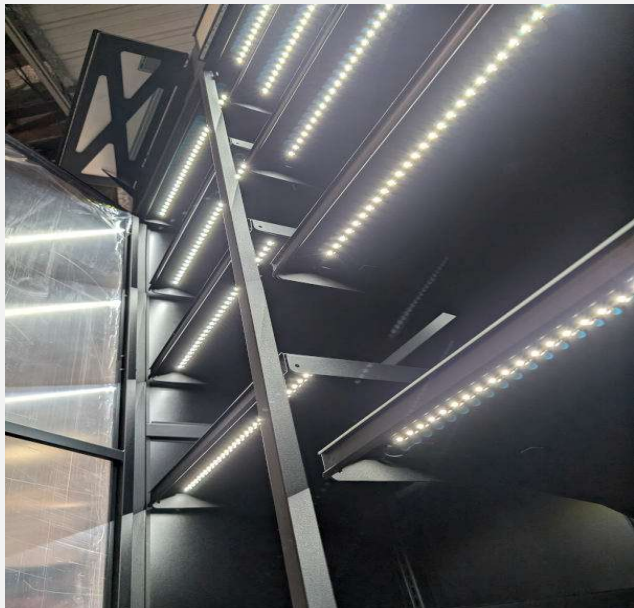
- Our standard 2ft, 3ft, and 4ft wide cabinets bolt together in-line, so we can build any length liquor wall you need.
- Liquor cabinets are made to **90"** standard height. We can also make your custom size cabinets, such as for placement on countertops.
- Fully-welded construction means no assembly needed. Once you have cabinets in your store and placed, simply use the supplied bolts to connect each cabinet to the next. Place your shelves as needed, plug LED into a standard outlet, and your display is ready to stock.
- CDW fixtures are built with hand-welded steel and sheet metal to ensure long-term durability.
- Finished in textured black industrial power coat for an attractive and long-lasting finish that hides fingerprints.
- Solid sheet $\frac{1}{4}$ " black MDF wood on cabinet sides and back give the cabinets a bookcase look so you don't see the wall behind. We also offer Plexi-glass cabinet backs as an option – for displays being placed in front of store windows.
- Our shelves are adjustable in 1" height increments. Individual shelves can be moved to different locations and height adjusted as needed. They can be set how you need them and be changed as your product mix changes.
- LED back-lit sign headers accept your translucent signage for brand advertising or promoting in-store specials. Our headers also feature an additional row of bright LED's to shine down on the colorful product packaging below. And any cabinet ordered with LED shelves gets LED applied to the cabinet ceiling as well.
- We also offer locking security doors, available for any liquor cabinet.



LIQUOR

CDW CREATIVE DISPLAY WORKS INC.

LED Sign Headers and LED Shelving



CDW liquor cabinets come with our LED headers as standard equipment. They're back-lit for translucent signage and include a bright row of LED downlights.



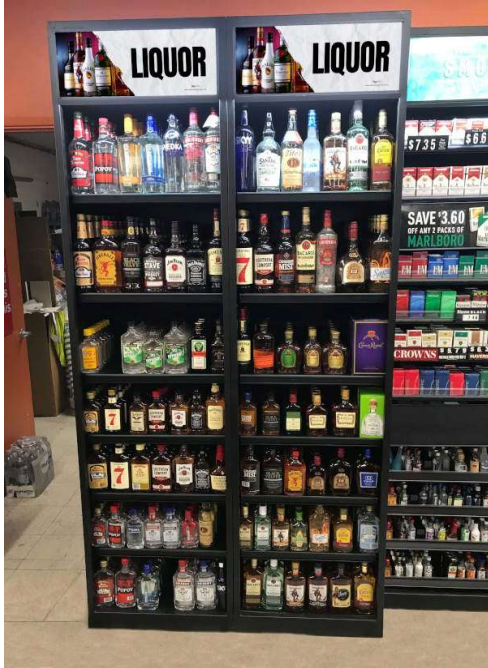
We can add optional LED shelving, helping you create a highly attractive bottle display that will help boost sales.

Sign/graphic dimensions:
2ft (22.25" x 8.25")
3ft (33.5" x 8.25")

4ft cabinets have (2) 2ft signs for each unit

CDW CREATIVE DISPLAY WORKS INC.

Standard Liquor Cabinets - 2ft, 3ft or 4ft wide - 90" tall & 22" deep



2ft x 90" x 22" with (6) shelves + LED header. Image is two 2ft wide units connected.....\$1200 each



3ft x 90" x 22" with (12) side-by-side steel shelves + LED header...\$1599



3ft x 90" x 22" with (10) side-by-side steel shelves + LED header....\$1499



16ft liquor wall display
Qty (4) 4ft x 90" x 22" cabinets connected into liquor wall display. LED sign headers and LED shelving.....\$7860 + shipping



Close-up of side-by-side steel shelves in 3ft wide cabinet, adjustable in 1" height increments

CDW CREATIVE DISPLAY WORKS INC.

Liquor Walls - connect multiple units together with supplied bolts



Our liquor wall displays are designed to meet the demands of modern convenience and liquor stores. These fixtures are built to showcase bottles safely, handle heavy loads, and offer store owners a durable and eye-catching solution to elevate their liquor sales.

Standing 90" tall, 4ft wide, and 22" deep, each cabinet connects easily to the next with just two supplied bolts. Side-by-side steel shelves are 1" height adjustable, so they can display all types of liquor bottles and ensure flexibility for changing inventory. Store owners can create stunning 8ft, 12ft, 16ft, & 20ft+ liquor display walls tailored to their space.

All cabinets feature LED back-lit sign headers for brand advertising or promoting in-store specials. And with optional LED downlighting on every shelf, these cabinets help create highly attractive displays that draw customer attention. We also offer options like locking security doors or custom heights if desired.

CDW CREATIVE DISPLAY WORKS INC.

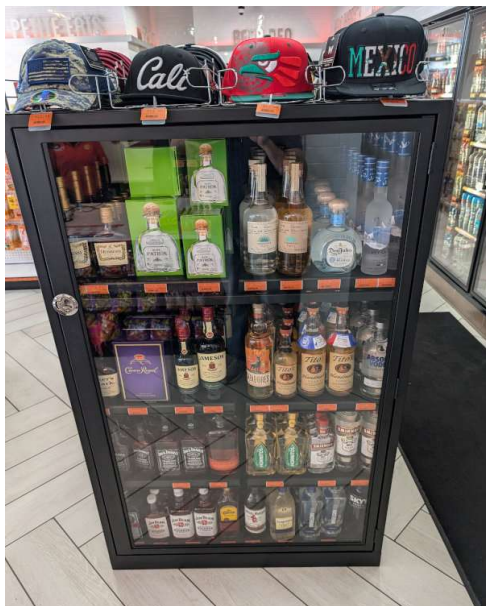
Custom Locking Liquor Displays -2ft, 3ft, or 4ft wide, custom heights, 22" deep



4ft x 90" liquor cabinet with end panel sides attached, double locking doors, +10 steel shelves & full LED signs & shelves.....\$2440.00. Without doors.....\$1965.00



4ft x 90" liquor wall cabinet, open-sided with double locking doors +10 steel shelves & full LED signs & shelves.....\$2440.00. Without doors.....\$1965.00



Custom 3ft x 60" locking liquor cabinet for end cap + 6 side-by-side steel shelves, no LED.....\$1535.00
With LED shelving.....\$1785.00



Close-up of our locking latches – photo of double door cabinet with 2 latches.



Custom countertop 3ft x 48" locking liquor cabinet + 6 side-by-side steel shelves, with LED shelving.....\$1685.00

We can add security doors to any liquor cabinet. Single and double doors available. LED shelves and sign headers available. We build to suit, so contact us today for a custom quote.

Custom Locking Liquor Displays – continued



Custom 9ft x 94" set with locking doors + 12 side-by-side steel shelves + LED headers.....\$5775.00



Custom 3ft x 64" cabinet with double locking doors + 6 shelves with LED shelving.....\$1785.00

Remote Locking Liquor Cabinet - 81" x 3ft x 28" deep – fixture not customizable currently
 Locked by a powerful magnet, employees can unlock for customers by remote from behind their checkout counter, up to 50ft away. The door then closes automatically and lock activates after. Requires standard 'always-on' outlet and includes (2) remotes. Includes (6) solid 3ft wide shelves with LED downlighting and on cabinet ceiling. This fixture is not customizable currently. Handle extends total depth by 1".
 \$2249.00 each + shipping



CDW CREATIVE DISPLAY WORKS INC.

Mini Liquor Cabinets – Standard 90" tall x 15.5" deep



Custom 94" tall x 5ft wide mini liquor display with maximum shelves. Fixed 'shooter' pusher shelves on bottom. Flat steel shelves for pints and halves on top.

2ft and 3ft mini-liquor 'shooter' pusher shelves.

2ft and 3ft wide fixtures can be used as stand-alone displays, our bolt together and combine with CDW tobacco cabinets. Our mini liquor cabinets match the depth of our tobacco cabinets at 15.5" deep. All other liquor cabinets are 22" deep, besides our mini liquor cabs.

And we can build to your custom height.



CDW Liquor Fixtures Price List – March 2025

90" tall standard height liquor cabinets are our best sellers – cabinets made to 22" depth

Standard cabinet dimensions	LED header only	Add LED shelves
4ft wide x 90" with LED sign header & 10 shelves	\$1699	\$1965
3ft wide x 90" with LED sign header & 10 shelves	\$1499	\$1798
2ft wide x 90" with LED sign header & 6 shelves	\$1200	\$1359

Liquor wall display dimensions	LED headers only	Add LED shelves
8ft wide x 90" tall display with LED headers & 20 shelves	\$3398	\$3930
12ft wide x 90" tall display with LED headers & 30 shelves	\$5097	\$5895
16ft wide x 90" tall display with LED headers & 40 shelves	\$6796	\$7860
20ft wide x 90" tall display with LED headers & 50 shelves	\$8495	\$9825
24ft wide x 90" tall display with LED headers & 60 shelves	\$10,194	\$11,790
28ft wide x 90" tall display with LED headers & 70 shelves	\$11,893	\$13,755

Optional locking doors – add security doors to any liquor fixture

4ft security door & locksets (double doors)	\$475.00 each
3ft security door & locksets (double doors)	\$440.00 each
3ft security door & lockset (single door)	\$325.00 each
2ft security door & lockset (single door)	\$277.00 each

Mini liquor cabinets – with 'shooter' fixed pusher shelves & flat steel shelves available

Mini liquor cabinets are 15.5" deep, built on the same frames as our tobacco bar cabinets.

3ft x 90" x 15.5" liquor w/LED header & 8 fixed pusher shelves + 3 steel shelves for pints....\$2015.00
 2ft x 90" x 15.5" liquor w/LED header & 8 fixed pusher shelves + 3 steel shelves for pints....\$1785.00

3ft x 90" x 15.5" liquor w/LED header & 11 fixed pusher shelves.....\$2347.00
 2ft x 90" x 15.5" liquor w/LED header & 11 fixed pusher shelves.....\$2049.00

Individual mini liquor shelves

3ft flat steel shelf for pints/halves.....	\$42
2ft flat steel shelf for pints/halves.....	\$34
3ft Mini liquor 'shooters' single shelf, 18 fixed pusher.....	\$166
2ft Mini liquor 'shooters' single shelf, 12 fixed pushers.....	\$122



Lead Times - Shipping - Payment

Lead Times

We manufacture for our corporate clients and for independent owners across the country. Sometimes our production line gets very busy, and we need 4 weeks or more to build and ship your fixtures. Other times, we may be able ship a standard set the same week the order is placed.

Lead times for new orders are *always* dependent on our current production schedule. Whenever possible, please place orders in advance when you know your 'need for' date. This allows us to help hit your target for arrival, or make sure we can build for you and deliver in time for a store opening.

Shipping

We ship on pallets with notified lift gate delivery to the front of your store. You'll receive tracking info by email the day we ship your set, and the carrier will call your provided phone number shortly before your shipment arrives.

We quote shipping costs up front with your requested tobacco fixtures estimate. We shop four national carriers qualified to deliver our fixtures and offer you our lowest quote among them.

Shipping 95" tall pallets that weigh hundreds of pounds unfortunately isn't free :(Please note that it's also much cheaper for us to ship to AZ, CA, NV, NM, & TX, and more expensive to ship to the Northeast and Eastern US. But we happily quote every customer we can who asks for a price.

Also note that drivers will not bring cabinets into your store under any circumstances. Moving cabinets from delivered location is solely the responsibility of the buyer. We recommend a good furniture dolly and a qualified helper when moving the fixtures from pallet into your store.

Payment - required to start any order

We accept funds through ACH transfer, or AMEX, Visa, MC by private payment link to start your order. Once you're happy with your quoted order, payment can be made easily through a payment link that we can send to you by both email and text.

Once we receive payment, your order is placed in que on our production schedule. Quotes are not orders until payment is received. We will email your invoice marked 'paid' as order confirmation and receipt. And a thank you for your business.

We hope to build for you soon